

Start Here

For further technical information and a full installation guide visit www.ecoplay-system.com

Ecoplay units should be fitted and commissioned by an approved Ecoplay installer.

Ensure that the correct Ecoplay model type for a single or double toilet installation has been specified (See model types and installation options below).



PRODUCT REFERENCE

FLOOR 2



B22SP

FLOOR 1



B22P



B21



FLOOR 2



B11S

FLOOR 1



B22*



B12S*



* Enquire about availability

Ensure that only **waste** water from a bath and/or shower is plumbed into the Ecoplay unit. **Failure to do this will invalidate the warranty**

INNOVATION IN MICRO GREYWATER TECHNOLOGY

1 1st Fix

Check parts supplied against parts list.

Note the 1st fix requirements.

1. Electrical connection (Fig 1)
2. Water in from shower and bath (Fig 2)
3. Cold water feed (through service valve) (Fig 3)
4. SVP connection: either Type A, B or C (see below)
5. Ensure adequate provision for fixing frame to wall i.e. for plasterboard a sheet of 22mm ply should be fixed to wall correctly for support
6. Safe tube for second toilet if fitted - refer to section 7



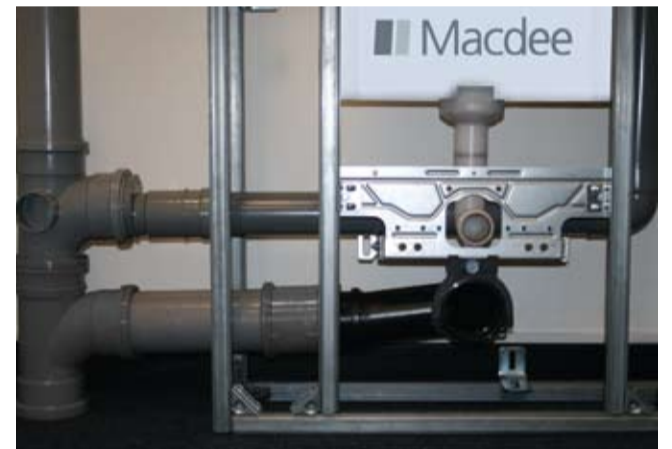
2 SVP Connections - always use a Swept Branch



Type A



Type B (right hand)



Type C (left hand) Optional left-hand pack required

3

2nd Fix Base Unit and SVP connections

Position base unit to receive SVP pipe as A, B or C. (Fig1)

If you are using a hanging toilet, fix the red support bracket before fixing the base unit to the wall (Fig 2). Red Support Brackets to be purchased as an optional extra.

Fix base unit with 3 fixings supplied (Fig 3). When a hanging toilet is to be installed, extension brackets must be secured with 2 additional fixings.

Fig 4 shows connection of SVP.

IT IS IMPORTANT TO ENSURE FIXINGS USED ARE COMPATIBLE WITH STRUCTURE TO WHICH ECOPLAY IS BEING ATTACHED.



4

Top Unit Fix

Ensure the four plastic connection lugs are fitted as shown (Fig 1). Lift the top unit and position on the lugs.

NOTE: This is a 2 person lift. (Fig 2)

Fix the top unit using the two fixings supplied. (Fig 3)

IT IS IMPORTANT TO ENSURE FIXINGS USED ARE COMPATIBLE WITH STRUCTURE TO WHICH ECOPLAY IS BEING ATTACHED.



5

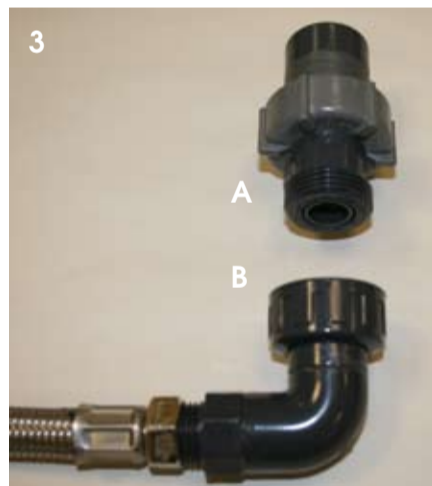
Fixing Waste Manifold to base unit pipework



Fix the Waste Manifold supplied to the bottom of the cleaning tank. Connect this pipe to SVP as type A, B or C. (Type B shown)



Make sure that the connection to the Overflow is connected to the Waste Manifold.



Fix toilet manifold supplied. Fix 'A' first and then attach 'B'. (Note: single toilet manifold shown)



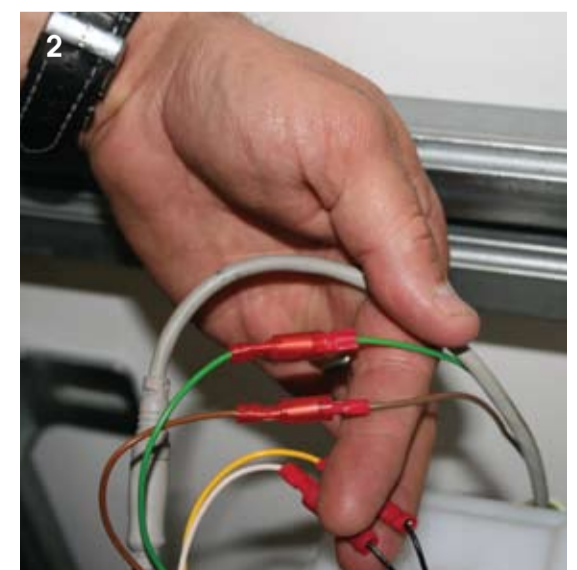
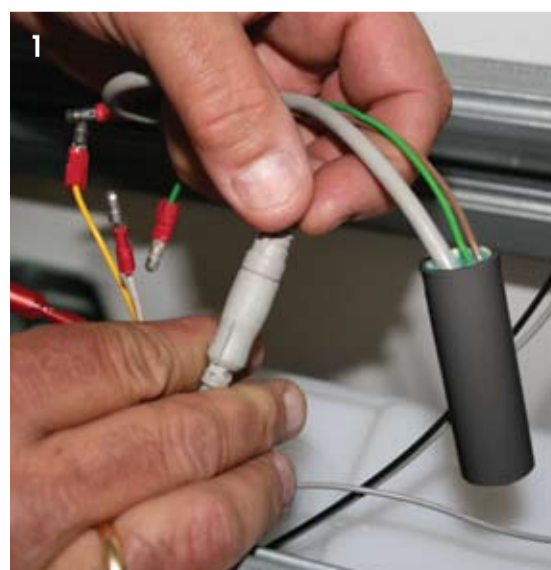
Flexible hose is connected from toilet manifold where indicated to toilet cistern.

6

Interconnections to base unit - electrical

Release the wiring loom from the frame. Connect the four colour-coded cables to the cable loom sited on the cistern.

There is a grey cable fitted with a ring connector, which is attached to the ECU fixing plate. This is for connection to the safe tube, but only when two toilets are installed. Before the electrical connections can be made, the ends of the safe tube need to be prepared as shown in section 7.



7 THIS STAGE APPLIES ONLY IF THE ECOPLAY UNIT IS TO SERVE A SECOND TOILET

1st Fix (see section 1, point 6)

Using the safe tube supplied, run pipe from the second toilet to the pump on the base unit (no more than 7.5 metre pipe length from the base unit). Run the interconnecting cable supplied back to the base unit.
N.B. Female end to base unit

Position the second toilet. Connect SVP as with a normal toilet. Connect earth bonding wire (4mm² minimum) to the lug on the frame (see section 9 fig 1).

Cut the safe tube to length.

Using the safe tube peeler, peel back the aluminium cover to reveal blue pipe. (Fig 1 and Fig 2)

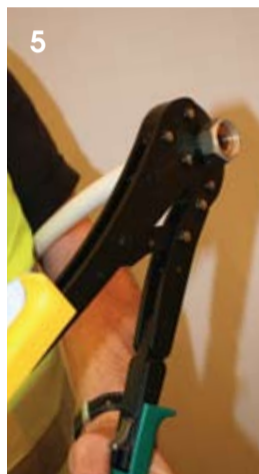
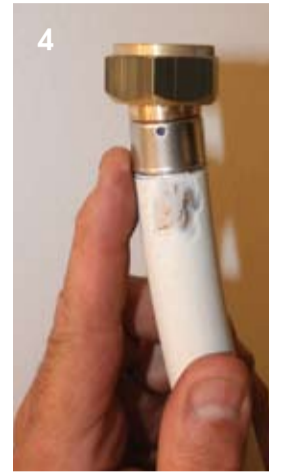
Peel back 20mm of white PVC to expose the aluminium core. (Fig 3)

Place silver crimp over the blue plastic pipe. (Fig 4)

Place brass insert into pipe and crimp. (Fig 5)

Connect safe tube to the elbow on the side of the flushing tank. (Fig 6)

Connect cable from second toilet using bolt and nut supplied. (Fig 7). Note: This cable is yellow.



SAFE TUBE TOOL PACK
The special tools required (available from merchants where Ecoplay is purchased) are a cutter, peeler and a crimper.

Base unit

Connect the four colour-coded cables to the loom. (Fig 1)

Fit toilet and pump manifold using flexible pipe provided. (Fig 2)

Connect the safe tube to the pump on the base unit. (Fig 3)

Remove grey cable from ECU fixing plate and fit to safe tube. (Fig 4)

At the top of the unit, find the plastic interconnector and connect the cable from the second toilet. (Fig 5).

If fitted, remove link and replace with extension cable.



Note: double toilet manifold shown.

8

Mains water connection to base unit.

Mains water connection through service valve (Fig 1)

Connect pipe from shower and/or bath to greywater input (fig 2)

Note 40mm diameter pipe.



INNOVATION IN MICRO GREYWATER TECHNOLOGY

9

Main electrical connections to base unit

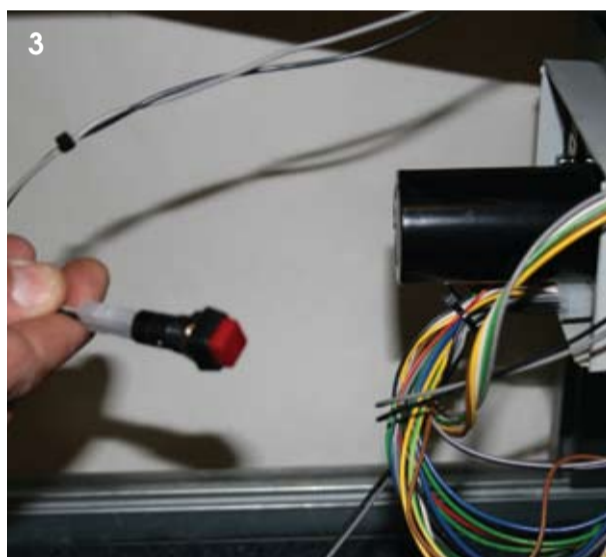
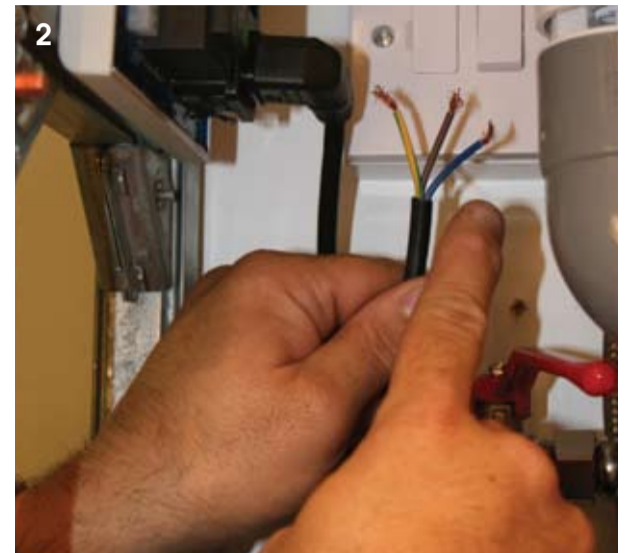
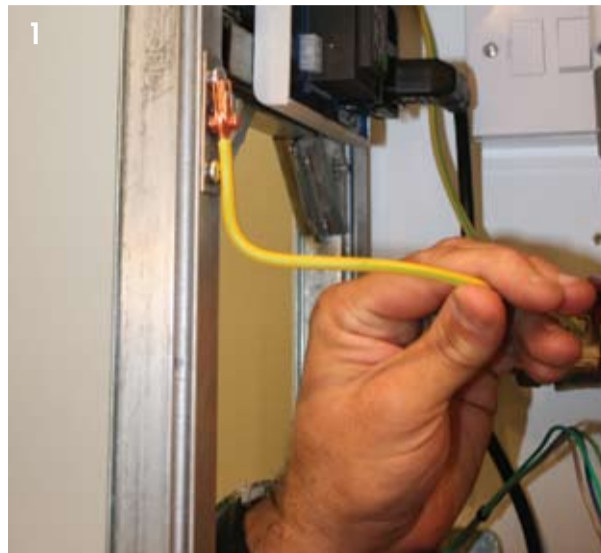
Connect earth bonding wire (4mm² minimum) to the lug on the frame (Fig 1)

From the transformer unit, connect the main cable to a switched spur unit or to a joint box if the switched spur unit is outside the WC/bathroom (Fig 2)

Connect the two long grey wires from the ECU to the purge switch supplied. (Fig 3)

Purge switch is fixed by a clip on push plate. (Fig 4)

Leave the short spare grey cables insulated (these are only needed if a temperature switch is supplied) (Fig 5)



10

Sanitaryware support connections

Set out the position of the sanitaryware and the supporting connections.

11

Fitment of the toilet pan and flush plate.

Follow instructions provided by the toilet and flush plate manufacturer.

12

Single floor application

A pump is supplied for pumping shower and/or bath water into the Ecoplay unit.

The pump requires a separate single phase 3 amp supply. Also required is a 22mm diameter pipe to run between the pump and the input to the Ecoplay unit. **Terminal** fittings for the pump and Ecoplay unit are supplied.

Note: maximum horizontal run of 8m with a vertical run of no more than 3m.

The pump should be placed under the bath or adjacent to the shower tray, ensuring access

is available. An overflow pipe connection (**as shown in typical installation arrangement**) is recommended in case of pump or power supply failure. When fitting the pipe it is important there are no dead sections where water can collect.

Access

Access to the top section of the Ecoplay unit is mandatory. Warranty will be invalid if access is not provided. A cladding solution including Ecoplay approved access panels is available on request.



COMMISSIONING

1. Check all connections are made as per installation instructions. i.e.
 - 1.1 Mains water to valve assembly
 - 1.2 Interconnection for toilet manifolds and pump.
 - 1.3 Check the safe tube connection (if fitted) and the cable to safe tube are on and have a good connection.
 - 1.4 Waste manifold and SVP connections.
 - 1.5 Check all electrical connections.
2. Turn water on at service valve.
 - 2.1 Toilet A will start to fill.
3. Switch on the electrical supply.
 - 3.1 The ECU will give a soft 'click' every second.
 - 3.2 If a second toilet is fitted, the pump will start filling toilet B. The pump will start and stop on demand. This is normal.
4. Turn on the bath or shower.
 - 4.1 The cleaning tank will start to fill (Check for leaks).
 - 4.2 After a few minutes the storage tank will start to fill and air valve operation will be audible after a short time, depending on the incoming flow rate.
 - 4.3 When the air valve can be heard to cycle i.e. there is no gap between operation, and water can be heard running down the overflow pipe, the storage tank is full.
5. Check again for leaks in the whole system.
6. Now hold the red purge button (pictured) for at least 7 seconds. The system now enters test mode. Leave the water from the shower and bath running.
7. Toilet A (and B if fitted) will flush and the main actuator will purge the whole system from the cleaning and storage tanks.



During commissioning the following beeps will sound three times if an error occurs:

- 2 beeps = Toilet A is empty**
- 3 beeps = Toilet B is empty**
- 4 beeps = Flush motor in toilet A malfunctioning**
- 5 beeps = Flush motor in toilet B malfunctioning**
- 6 beeps = No activity at shower/bath sensor**
- 8 beeps = No safe tube connection**

If system is ok there will be 1 long beep.

If toilet B is not installed the 5 beeps alarm will always sound. This is normal.

In any other case there should not be any beeps. If there are, note the beeps and contact Ecoplay.

Repeat the procedure at least twice then turn off the water in the shower/bath.

Commissioning is complete.

To prevent building waste entering the Ecoplay system before commissioning, ensure bath and shower tray and all pipework, (including mains water feed), is cleared and clean of debris before connecting mains water supply and waste return pipes to Ecoplay. Once Ecoplay has been commissioned, it is important to prevent debris and contaminants entering the system via the shower and bath waste plumbing.

FAILURE TO OBSERVE THIS INSTRUCTION MAY INVALIDATE WARRANTY

Disclaimer:

The Ecoplay system is designed to recycle bath and shower water generated from normal domestic use containing only standard proprietary shampoos, shower gels, soaps and bubble bath products.

The Ecoplay system is not designed for the disposal of chemicals or products not intended for normal bathing/showering activities such as paints and solvents or chemicals such as Sodium Polyacrylate which is often found in fun bath products.

Use of such substances is strictly prohibited and CME Sanitary Systems Limited accepts no liability to you if any such chemicals or products are used and the Ecoplay system is damaged or fails to work properly. In addition, use of the products will also invalidate any warranty provided with the system.

Please note the list of prohibited products is not exhaustive. If you are considering using a product but are in doubt as to whether the Ecoplay system will recycle it then please contact CME technical support on 01302 792115 and we will be happy to provide further guidance.