



BY APPOINTMENT TO
HER MAJESTY THE QUEEN
MANUFACTURERS OF BATHROOM
& WASHROOM FITTINGS
TWYFORD BATHROOMS
STOKE-ON-TRENT

Twyford
bathrooms

Registered office: Lawton Road, Alsager, Stoke-on-Trent ST7 2DF, UK
T: +44(0) 1270 879777 F: +44(0) 1270 873864
www.twyfordbathrooms.com

Part of the Sanitec Group
Ref: TWNY0040/1



SAVING WATER | THE FACTS

Twyford
bathrooms

FACT:

Billions of litres of water are wasted each and every day

Where we are now

FACT:

The average UK home uses 150 litres of water per person, per day

Since 1930, water use has increased by 1% each year, every year. All experts and authorities agree that this is not sustainable, and urgent action is required.

Currently, the average UK household (2.65 residents in the average UK home) usage is **150 litres** per person per day, much of which is flushed down the toilet.

30% of our water is flushed down the toilet. One of the main reasons for this is the number of old toilets being used in the UK - many of which were installed decades ago. These older toilets use up to **13 litres** - 3 gallons - per flush, and there are an estimated **7 million** in use.

- In the 1960's Twyford led the way in reducing flush volumes - to 9 litres
- In the 1980's the UK Government legislated for the 7.5 litre flush
- From 2001 Water Regulations set a new standard - 6 litres for a long flush, 4 litres for a short flush. Install a new toilet that uses more and you're breaking the law
- Current best practice suggests 4.5 litres maximum

Due to the number of old toilets in use, government statistics estimate the average UK flush to be 9 litres.

Twyford are changing this dramatically.



Water use in the UK home



Where we aim to be

SOLUTION

The UK Government aims to reduce water consumption to 80 litres per person, per day

DEFRA initially want to drive water consumption down to **120 litres** per person per day (Level 1). The Department for Communities and Local Government, along with DEFRA and the Code for Sustainable Homes, set an even more strenuous target for newly built sustainable homes - **80 litres** a day (Level 6).

What can Twyford do to help in the bathroom?

- WC suites should be 4.5 litre maximum for a single flush or 6 and 4 litre dual flush (effective flush volume 4.5 litres)
- Baths should be 200 litres maximum to overflow - rather than the current 230 litres
- 'Push-down' taps (except for baths) are in domestic appliances
- Taps should have a flow rate not exceeding 6 litres per min @ up to 5 bar pressure

Further criteria has been set out by the UK Government in their Code for Sustainable Homes. This establishes the national standard for the sustainable design and construction of new homes, and sets minimum standards for energy and water consumption. The Code introduces a one to six star sustainability rating system for water efficiency. The overall aim is to reduce the consumption of potable water in the home.

With innovative, imaginative thinking from Twyford, we can make it happen.

For further details visit www.breeam.org or www.communities.gov.uk



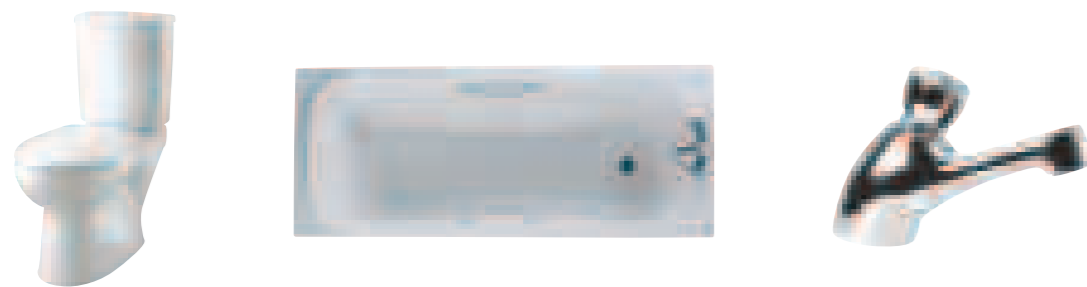
SOLUTION:

Twyford Bathrooms are leading the way in water conservation

Water is one of our most precious resources - and in the campaign to conserve it, Twyford Bathrooms are leading the way.

Galerie flushwise, our revolutionary new **4 or 2.6 litre** dual flush toilet system, cuts water consumption dramatically - by more than **60%**. We've vastly reduced the water capacity of baths and introduced commercial taps which save on wastage each and every day.

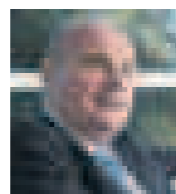
More and more 'water-saving' bathroom technology is being developed by our specialist designers and engineers, and we are the only company to have been awarded the **Waterwise Marque** for a water saving WC.



Trust Twyford to look after you, the environment - and the future.

"We are very proud of the Galerie flushwise WC, and we are delighted to have been awarded the Waterwise Marque."

Bengt Pihl - President and CEO of Sanitec Group, the parent company of Twyford Bathrooms. Speaking at the British Water Efficiency Conference 2007.



Twyford
bathrooms

FACT:

UK toilets needlessly flush away 1.2 billion litres of water a day



SOLUTION:

The Twyford **Galerie flushwise** 4 or 2.6 litre dual flush WC uses less than half the water of most toilets

Galerie flushwise, the revolutionary new **4 or 2.6 litre** dual flush system from Twyford, cuts the amount of water needed for the perfect flush by up to **60%**.

Uses less water than any other toilet currently on the market

According to UK Government figures, the average standard flush uses **9** litres of water.

Galerie flushwise uses **4 or 2.6** litres and leads the field for reducing water consumption.

It's the only WC suite to be awarded the new **Waterwise Marque**.

It's at an affordable price and it provides an economic and eco-friendly flush system for domestic WCs, whilst supporting the Code for Sustainable Homes.



Trust Twyford to take more care of the environment.



Galerie flushwise WC Pack - GECO42WH

FACT:

In the UK, we now use 30% more water than in 1970

SOLUTION:

Our 4 litre single flush concealed cisterns save even more water than the new DEFRA recommendations

Using the new concealed cistern **CX9514XX** push button or **CX9251XX** lever, the following back-to-wall and wall hung pans flush with just **4 litres** of water - beating the DEFRA target of **4.5 litres**.

Back-to-wall - Refresh, Galerie, Sola Rimless and Avalon Rimless.

Wall hung - Refresh and Galerie.

Using water efficient WCs like these in domestic and commercial applications can make a significant difference.

Here's a typical example which shows just how much water can be saved:

In a typical hospital with **1000 WCs**, each flushed **4 times** an hour the saving per WC per day is **192 litres**.

That adds up to **70 million litres saved a year**.

Trust Twyford think about saving water.



Refresh back-to-wall



Sola Rimless back-to-wall



Refresh wall hung



Galerie wall hung



Galerie back-to-wall



Avalon Rimless back-to-wall



FACT:

The UK Government aims to reduce the amount of water used when bathing



SOLUTION:

The Twyford Signature bath has a rated capacity of just 140 litres

Many people love to relax with a nice long soak in the bath. But unfortunately, compared with taking a shower, each bath uses a vast amount of water.

The government target is to reduce bath rating capacities to below **230 litres** - Twyford have gone a step further. The Signature bath means you can have a good deep bath - with a rating of only **140 litres** of water. It's a standard size bath, but cleverly shaped inside to reduce the amount of water needed - in fact, it's probably the lowest volume bath of its sort on the UK market. And it's priced economically too.

In fact, the majority of our baths are below **200 litres** rating capacity, so Twyford make it easy to reach and exceed Government standards.

Trust Twyford to have such a low volume bath.



Twyford Signature bath

Note: rated capacities are based on volume of bath to overflow level.

FACT:

A running tap uses 6 litres of water per minute



SOLUTION:

Twyford press action taps save water by working in short bursts

If you brush your teeth twice a day for two minutes each time, just think how much water you're wasting by leaving the tap running: **24 litres a day, 168 litres a week, 8,736 litres a year** for each member of your household.

In commercial environments leaving taps running can be a big problem and a huge waste of water.

Twyford press action taps help solve the problem by delivering water in controlled short bursts and can't be left running.

Meeting and exceeding the government's new guidelines - just as you'd expect from Twyford.

Trust Twyford to exceed the government's guidelines.



sola | non-convulsive press action tap



sola | non-convulsive toggle tap



THE FACTS ABOUT OUR ENVIRONMENTAL POLICY:

At Twyford, we are committed to protecting the natural environment in everything we do - with new water-saving products, a commitment to the Code for Sustainable Homes, an innovative and responsible approach to packaging and production methods which are as eco-friendly as possible.

We're committed to reducing wastage and to introducing initiatives to minimise the effect we all have on the world's resources.

You can always trust Twyford to be helping the environment. And here are some of the ways we're doing just that...

Helping to create sustainable homes

Twyford is leading the way in fulfilling the criteria set out by the UK Government in their Code for Sustainable Homes. This establishes the national standard for the sustainable design and construction of new homes and sets minimum standards for energy and water consumption. The code will help people who want to be green consumers, telling them not just about their future fuel bills, but also about the quality of their homes and their use of water.



ISO 14001 Accreditations

ISO 14001 is a series of integrated standards on environmental management. Twyford Bathrooms have achieved ISO 14001 accreditation status for our Environmental Management System - and all of our working practices and products, reflect this philosophy.

More and more water-saving bathroom technology is being developed by our specialist designers and engineers - enabling you to live in homes which answer the need for water conservation.

Reducing Packaging

The move to using Plastic Netting packaging uses **50%** less plastic than shrink wrapping for piece protection, and it's a reusable product, making it even more efficient. Less plastic used and less for disposal. Another way in which Twyford are helping the environment whilst improving our service to you.

Recycling

The cardboard boxes used for some products now use the most environmentally friendly recycled board available.



All labels on our products use vegetable based or alcohol free inks.

We have put a 'pallet recovery' program into place, dramatically reducing the amount of timber we use - by repairing and re-using the pallets our products are delivered on.

Wherever we can find ways to make our use of natural resources more efficient, we put them into action. We are actively seeking out more and more ways to make our business, and our products, eco-friendly.

The Sanitec Vision and Strategy - aiming for the lowest carbon footprint for our industry

Sanitec is the leading European provider of bathrooms solutions. The Sanitec Group is based around locally well known brands, which have strong positions and deep roots in the bathroom business.

Sanitec - the leading Global Bathroom Solutions provider

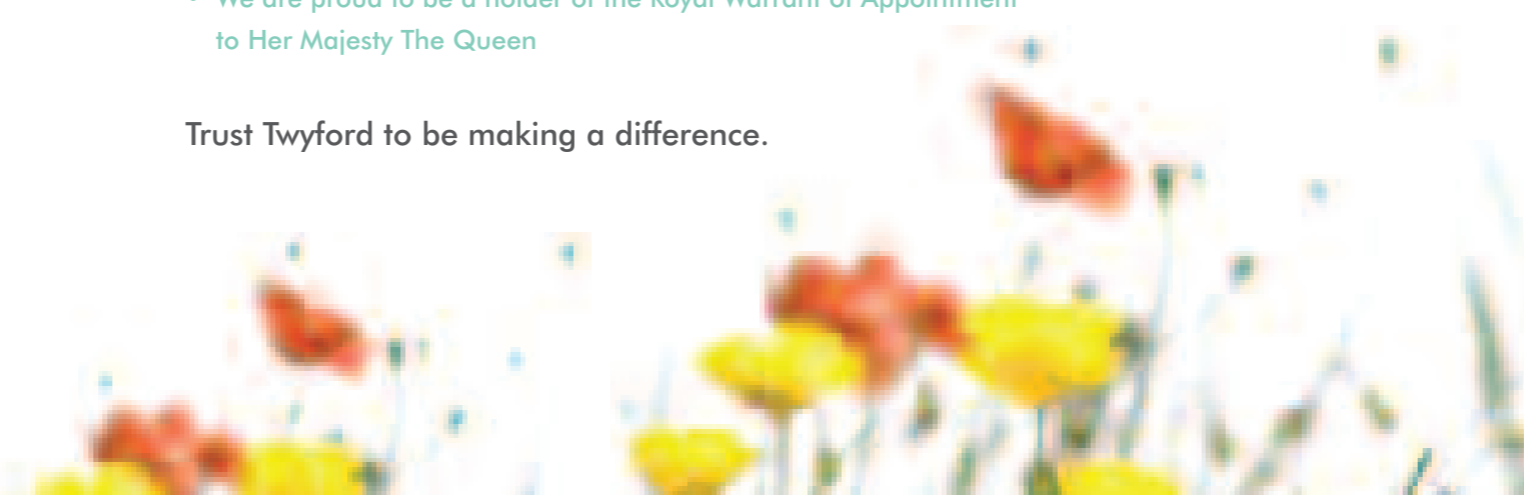
Sanitec will be the most successful, innovative and environmentally responsible bathroom solution company in the world, providing value to our customers, employees and owners.

“Our bathrooms make people feel at home wherever they may be.”

6 more facts - about Twyford and the environment

- As a responsible manufacturer, we aim to reduce the use of gas, electricity and water in our factories and offices - and we're achieving or bettering our targets in all instances
- As part of improvements being made to our production processes, we're also reducing plaster mould, filter cake and pitcher waste - all important environmental factors
- We have reclaimed two landfill sites, fully landscaping them and planted trees and shrubs native to the area
- The copse and trees that form the boundary of our premises were planted by Twyford
- We are Corporate Members of Cheshire Wildlife
- We are proud to be a holder of the Royal Warrant of Appointment to Her Majesty The Queen

Trust Twyford to be making a difference.



FACT:

South East England has less water per person than Sudan or Syria, and London is drier than Istanbul

SOLUTION:

The Twyford range of eco-friendly products

Achieving a Sustainable Code Rating - At Twyford we want to help to make it easier to achieve your desired level of the code. Obviously there are many other contributing factors to support the Code for Sustainable Homes and at Twyford we have developed a number of innovative products to move you to the next level of the code.

The table below illustrates the products you can specify with confidence knowing that they are fully compliant with current legislation and fit into the suggested levels to achieve the star rating you desire.

Trust Twyford to help you take care of the environment

Code level	How to achieve the level	Suggested Twyford products to help achieve this level
1 (★) And 2 (★★)	Standard water usage per person per day 120 litres	6/4 Litre Dual Flush WCs Flow, Envy, Entice, Galerie, Galerie Optimise, Wave, View, Refresh, Elite, Indulgence, Impression, Energy, Distinction, Integrity, Inspire, Source 4 Litre Single Flush Concealed Cisterns Refresh, Galerie
3 (★★★) And 4 (★★★★)	Standard water usage per person per day 105 litres	6/4 Litre Dual Flush WCs Flow, Envy, Entice, Galerie, Galerie Optimise, Wave, View, Refresh, Elite, Indulgence, Impression, Energy, Distinction, Integrity, Inspire, Source 4/2.6 Litre Dual Flush WC Galerie Flushwise 4 Litre Single Flush Concealed Cisterns Refresh, Galerie Baths <200 Litre Rating Capacity Avalon, Envy, Galerie, Galerie Anglo, Galerie Optimise, Normandie, Source, Option, Portia, Refresh, Rio, Riviera, Celtic, Assisted, Luna, Neptune, Shallow Signature Bath 140 Litre capacity
5 (★★★★★) And 6 (★★★★★★)	Standard water usage per person per day 80 litres	4/2.6 Litre Dual Flush WC Galerie Flushwise Signature Bath 140 Litre capacity

Please note that this page only indicates what products Twyford can offer to help you achieve a higher level. There are other stringent requirements which must be met to be awarded the relevant code levels.



For full details of the Code for Sustainable Homes please refer to www.breeam.org or www.communities.gov.uk